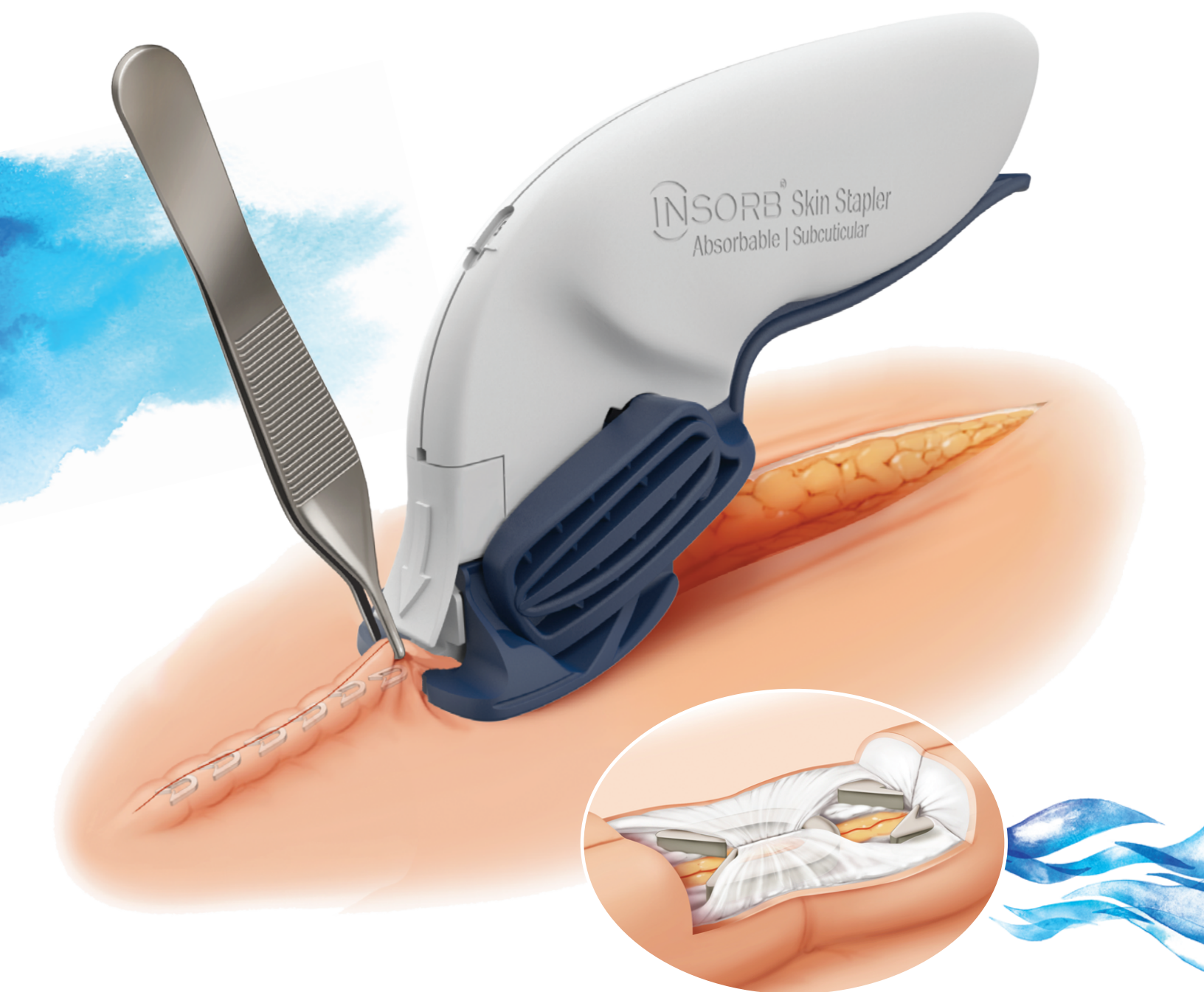


INSORB®
Subcuticular Skin Stapler

by  CooperSurgical®

The Rapid, Cosmesis-Proven Skin Closure Solution^{1,2,3}



Redefining Optimal Skin Closure

INSORB® skin stapler is a sterile single-use device that deploys 30 absorbable staples, sufficient to close an incision up to 21 cm in length.^{4,8,*}



INSORB® is composed of a copolymer derived from polylactide-polyglycolide (PLA/PGA) which has a well-established history in wound closure.⁶

INSORB staples are placed entirely underneath the surface layer of skin (epidermis). These staples offer clinical benefits, are cost-effective,^{2,3} and highly cosmesis-proven.^{2,3} Wound care for patients with absorbable staples is similar to care for conventional incision closures, and may even have fewer complications.^{9,12}

Interrupted Closure

INSORB staples create an interrupted closure that naturally allows for immediate wound drainage.⁸

Wound Eversion

Using the INSORB stapler, surgeons can create a raised incision line (eversion). Eversion is a technique usually used by plastic surgeons. It keeps tension away from the wound edges and flattens over time to create a minimal scar. The INSORB absorbable skin stapler allows eversion to be used in more common surgeries.^{7,8}

Eliminates Percutaneous Insults

Incisions closed with INSORB do not have the numerous skin perforations of metal skin staples.¹¹ Clinical studies have shown that using INSORB staples may reduce wound complications and may result in less pain immediately post-op, compared to percutaneous metal skin staples.^{12,14,††}

Wound Care for Patients With INSORB Staples

It is normal to observe a raised incision line post-operatively. This desirable wound eversion will gradually flatten over time as the wound heals.⁸

Cosmetic Result of INSORB® Absorbable Skin Staples

Benefits of INSORB® vs Suture

INSORB absorbable skin stapler is designed to create uniform, symmetric dermis-to-dermis closures.

- Increases skin eversion, which may improve healing and cosmesis^{2,7}
- Reduce closure time compared to sutures^{1,3}
- May result in reduced hand fatigue⁵
- Eliminates risk of needlestick injuries at the time of closure^{8,9}
- Less hypertrophic scarring^{10,†}

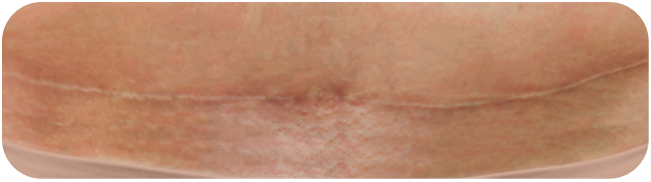
Benefits of INSORB® vs Metal Staples

The INSORB absorbable skin stapler eliminates the percutaneous insult created by metal skin staples.^{8,11,‡}

- Prevents the potential of “railroad track” scars^{8,11}
- Evidence of reduced wound complications in c-sections¹²
- Spare patients inconvenience, anxiety, and discomfort associated with metal staple removal^{11,13}
- Potentially less pain immediately post-op^{14,Ω}



C-SECTION
1 YEAR POST-OP



ABDOMINOPLASTY
1 YEAR POST-OP



MIDLINE INCISION
1 YEAR POST-OP

There are multiple factors that can affect patient results and recovery and these results may not be representative.



ORDERING INFORMATION

INSORB® Skin Stapler

NUMBER	DESCRIPTION
2030	INSORB Absorbable Skin Stapler — Box of 6
9100	INSORB Double Adson Forceps

LEARN MORE
ABOUT OUR SPECIALTY
SURGERY PORTFOLIO



CooperSurgical, Inc.
800-243-2974
coopersurgical.com

FOOTNOTES

- * When staples are placed at 7 mm intervals
- † Compared to suture 8.3% with INSORB vs. 20.7% with standard sutures in breast surgery
- ‡ For proper technique, www.insorb.com/IFU

- Ω In c-sections
- †† In Plastic Surgery
- ‡‡ Compared to Metal Staples in C-sections

REFERENCES

1. Madsen, Annetta Madeline, et al. Absorbable Subcuticular Staples Compared with Suture for Cesarean Closure. *Obstet Gynecol.* 2015; vol. 125
2. Cross, K. J., Teo, E. H., Wong, S. L., Lambe, J. S., Rohde, C. H., Grant, R. T., & Ascherman, J. A. (2009). The absorbable dermal staple device: a faster, more cost-effective method for incisional closure. *Plastic and Reconstructive Surgery*, 124(1), 156–162.
3. Patel, V., Green, J. L., Christopher, A. N., Morris, M. P., Weiss, E. S., Broach, R. B., & Butler, P. D. (2021). Use of Absorbable Dermal Stapler in Reduction Mammoplasty: Assessing Technical, Quality-of-Life, and Aesthetics Outcomes. *Plastic and Reconstructive Surgery: Global Open*, 9(8), e3784–e3784.
4. INSORB Bill of Materials February, 2021 CooperSurgical, Inc. Trumbull, CT
5. Bron, T., & Zakine, G. (2016). Placement of absorbable dermal staples in mammoplasty and abdominoplasty: A 12-month prospective study of 60 patients. *Aesthetic Surgery Journal*, 36(4), 459–468.
6. Gunatillake, P. A., & Adhikari, R. (2003). Biodegradable synthetic polymers for tissue engineering. *European cells & materials*, 5, 1–16. <https://doi.org/10.22203/ecm.v005a01>
7. Kalaskar B.Tech PhD, Dr Deepak K., Butler MD FRCSI FRCS FRCS (Plast) Professor of Plastic and Reconstructive Surgery UCL, Professor Peter E., Ghali, Shadi: *Plastic and Reconstructive Surgery*. London, UK. 2016
8. INSORB Surgical Stapler [Instructions For Use]. Trumbull, CT. CooperSurgical, Inc.; 2019
9. The International Healthcare Worker Safety Center (University of Virginia Health System)
10. Caye, N. (2011). The benefit of the INSORB® subcuticular skin stapler in plastic surgery. Preliminary 2-year study in breast and abdominal surgery. *Journal of Wound Technology*, 14, 30–32.
11. Dresner, H. S., & Hilger, P. A. (2009). Comparison of incision closures with subcuticular and percutaneous staples. *Archives of Facial Plastic Surgery*, 11(5), 320–326.
12. Schrufer-Poland, T. L., Ruiz, M. P., Kassir, S., Tomassian, C., Algren, S. D., & Yeast, J. D. (2016). Incidence of wound complications in cesarean deliveries following closure with absorbable subcuticular staples versus conventional skin closure techniques. *European Journal of Obstetrics & Gynecology and Reproductive Biology*, 206, 53–56
13. Feese, C. A., Johnson, S., Jones, E., & Lambers, D. S. (2013). A randomized trial comparing metallic and absorbable staples for closure of a Pfannenstiel incision for cesarean delivery. *American journal of obstetrics and gynecology*, 209(6), 556.e1–556.e5565.
14. Nitsche, J., Howell, C., & Howell, T. (2012). Skin closure with subcuticular absorbable staples after cesarean section is associated with decreased analgesic use. *Archives of gynecology and obstetrics*, 285(4), 979–983. <https://doi.org/10.1007/s00404-011-2121-5>

IMPORTANT SAFETY INFORMATION

INSORB® Subcuticular Skin Stapler is intended for use in the subcuticular closure of skin where an absorbable tissue fastener is desired for temporary tissue approximation. Contraindicated for: thin or thick tissue, and scar tissue where effective tissue capture cannot be achieved; if the needle path is obstructed; and when radiopacity or prolonged tissue approximation is necessary or desired. For detailed instructions and risk information, please refer to the Instructions for Use. www.insorb.com/instructions-for-use

INSORB®
Subcuticular Skin Stapler