

**ONETRAC® LX**  
Lighted Retractor

by  CooperSurgical®

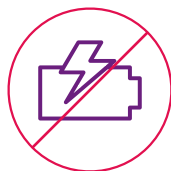
# Cordless, Intracavity Illumination



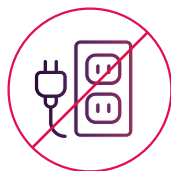
# Cut the Cord

## The Challenge

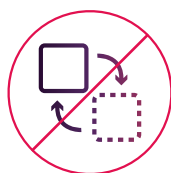
Reusable medical devices and light sources can be costly, requiring regular maintenance and reprocessing. Utilizing reusable devices can increase the risk of cross-contamination and the occurrence of patient safety issues.<sup>1,2</sup>



**NEVER  
RECHARGE**



**NEVER  
PLUG IN**



**NEVER  
REPLACE PARTS**



**NEVER  
REPROCESS**

## The Solution

ONETRAC® LX Lighted Retractors come ready for use: no additional parts, components, assembly, or reprocessing required. By switching to an entirely single-use and easy-to-use solution, you can mitigate the risk of cross-contamination, and eliminate the cost of reprocessing.<sup>1,2</sup>



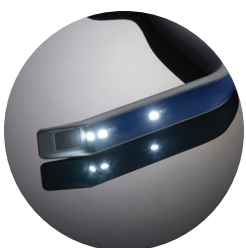
# ONETRAC® LX

Single-Use Cordless Retractor with  
Integrated Multi-LED Light Source

ONETRAC® LX is a single-use, cordless surgical retractor with integrated multi-LED light source and dual smoke evacuation channels.\*

This ready-to-use device eliminates the time and expense of reprocessing and reduces the risk of cross-contamination<sup>1,2</sup> in the surgical setting by making reusable, handheld surgical retractors and associated fiber-optic light cables obsolete.

Illumination in the depths of a surgical pocket can be met within seconds — no assembly, additional parts/components, or fiber-optic cables required.



Multiple LEDs for  
maximum illumination  
strength and coverage  
of a deep pocket



Ergonomic  
handle design

### Product Features

- Integrated cordless LED lights provide direct illumination and over 3 hours of continuous use
- On/off button allows user to cycle through multiple lighting configurations and preserve battery life when not in use
- Graded centimeter reference markings along the blade (blade size-specific)
- Integrated dual smoke evacuation channels for rapid smoke suction
- Color-coded size indicator and battery activation tab
- Touch-free battery removal allows for disposal of batteries without battery contact for easy disposal
- Atraumatic grip at distal end of blade

## Think your current medical devices and light sources are clean?

**Think again.** Recent studies demonstrate the potential for transmission of pathogens and highlight a clear risk to both staff and patients.

### Healthcare-Associated Infection

~1 in 31 U.S. patients contract at least one healthcare-associated infection (HAI) each day.<sup>3</sup>

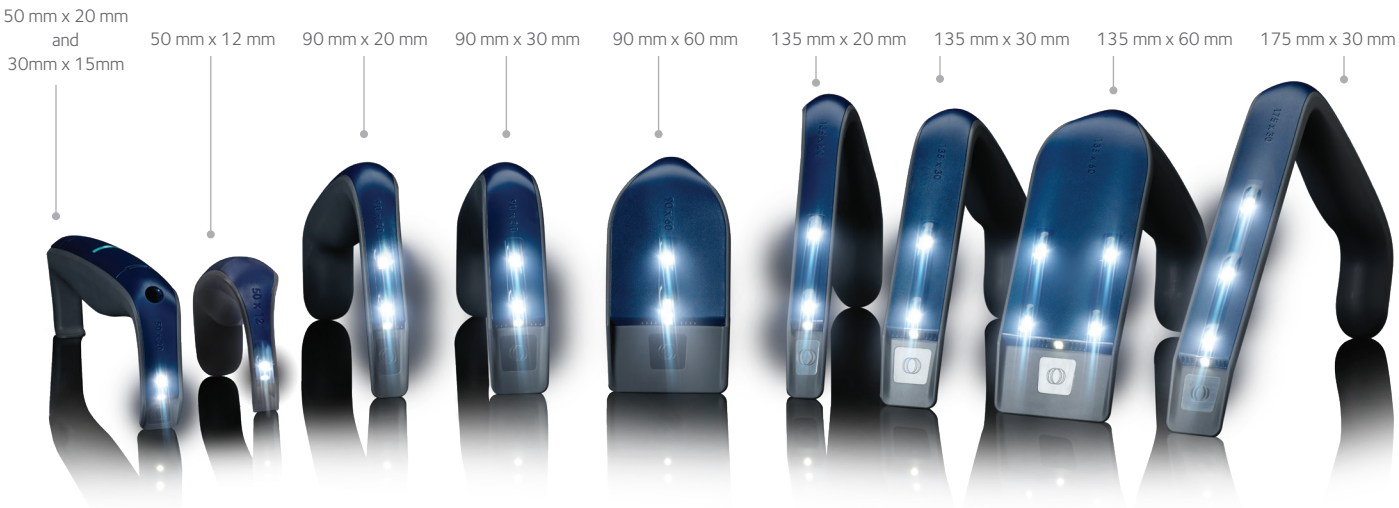
### 350,000 Deaths

HAIs can lead to sepsis, which affects 1.7 million U.S. adults annually, of which at least 350,000 people die as a result.<sup>4</sup>

### Billions Spent

In 2016 the U.S. spent between \$7.2 to \$14.9 billion on HAIs.<sup>5</sup>

## Available in Multiple Sizes



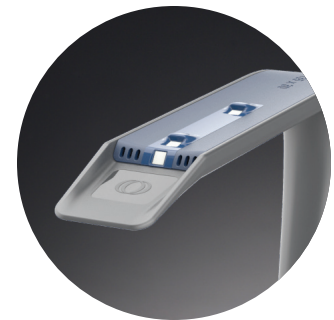
\*If smoke evacuation is desired, attach smoke evacuation tubing (not included).

# ONETRAC® LX D

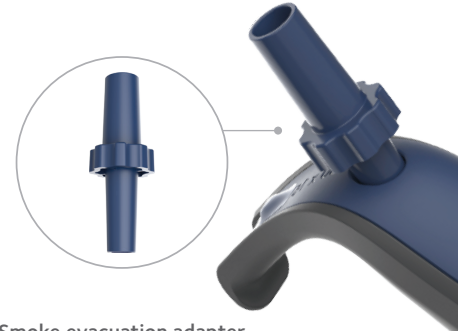
Single-Use Cordless Dual-Blade Retractor  
with Integrated Multi-LED Light Source

## AVAILABLE SIZES

- 50 mm x 20 mm
- 30 mm x 15 mm



Multiple LEDs located on both ends to maximize illumination strength & coverage



Smoke evacuation adapter (included with each unit)



LEARN MORE ABOUT OUR  
SPECIALTY SURGERY PORTFOLIO

Contact your CooperSurgical sales representative for additional information, or place your order directly with CooperSurgical Customer Service at:

800-243-2974 | 203-601-5200 | [coopersurgical.com](https://www.coopersurgical.com)

## Ordering Information

ORDER #	PRODUCT	SIZE
C100210	ONETRAC LX Retractor	135 mm x 30 mm
C100220	ONETRAC LX Retractor	175 mm x 30 mm
C100230	ONETRAC LX Retractor	90 mm x 60 mm
C100240	ONETRAC LX Retractor	90 mm x 20 mm
C100250	ONETRAC LX Retractor	50 mm x 12 mm
C100260	ONETRAC LX Retractor	135 mm x 60 mm
C100280	ONETRAC LX Retractor	90 mm x 30 mm
C100290	ONETRAC LX Retractor	135 mm x 20 mm
C100270	ONETRAC LX D Retractor (with Smoke Evacuation Adapter)	50 mm x 20 mm 30 mm x 15 mm

Sold individually (1 EA/BX)

1. Food and Drug Administration. Reprocessing of Reusable Medical Devices. <https://www.fda.gov/medical-devices/products-and-medical-procedures/reprocessing-reusable-medical-devices>. Updated January 10, 2023. Accessed July 29, 2024.
2. The Joint Commission. Quick Safety: Ensuring critical instruments and devices are appropriate for reuse. Oakbrook Terrace, IL: The Joint Commission; (62) 2022.
3. Center for Disease Control. Current HAI Progress Report. 2024 National and State Healthcare-Associated Infections Progress Report. November 25, 2024
4. National Institute of General Medical Sciences. Sepsis. <https://www.nigms.nih.gov/education/fact-sheets/Pages/sepsis> Updated February 13, 2025. Accessed July 2025.
5. Forrester JD, Maggio PM, Tennakoon L. Cost of Health Care-Associated Infections in the United States. J Patient Saf. 2022;18(2):e477-e479

ONETRAC® LX  
Lighted Retractor

by  CooperSurgical®