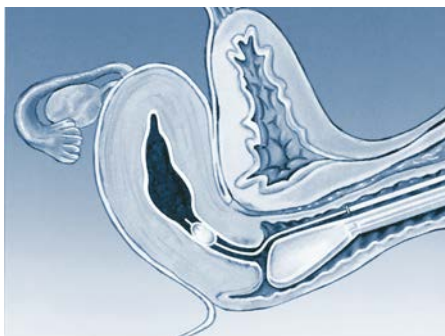


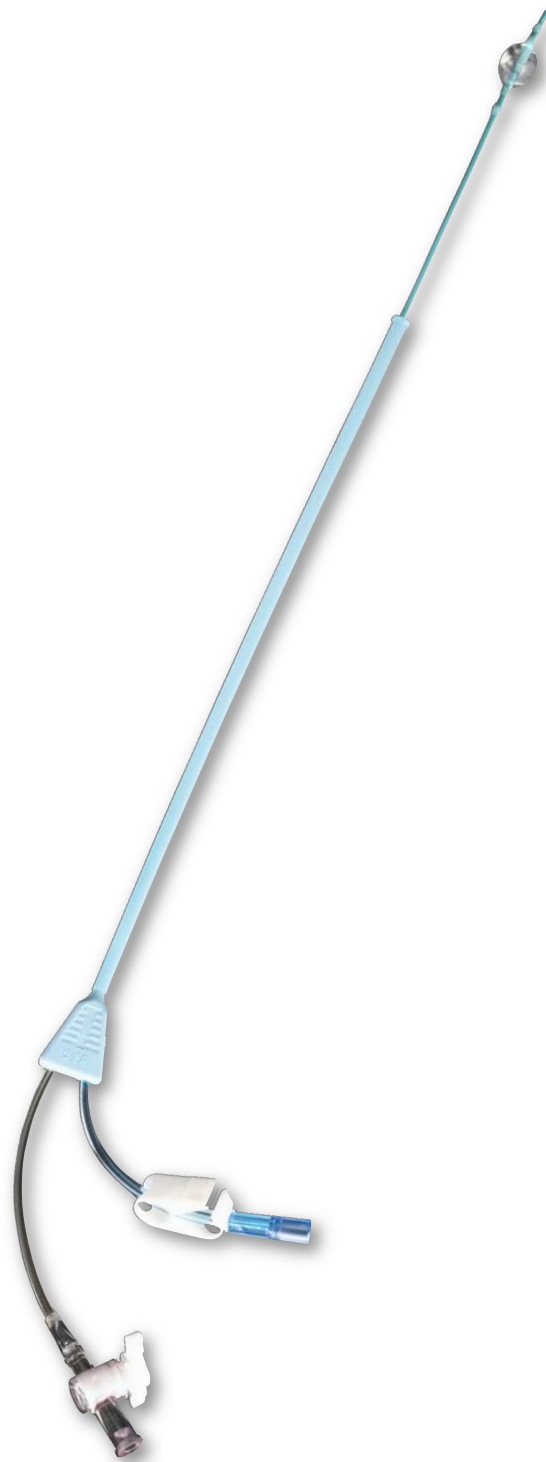
# H/S Elliptosphere™

## The safe and simple answer for both Sonohysterography and Hysterosalpingography

- Patented Elliptosphere balloon affords complete clinical control with minimal patient discomfort
- Control of balloon contour and volume permits secure placement in the cervical canal or uterine cavity for optimal visualization
- Catheter can be used with oil- or saline-based medium
- Unique balloon design prevents retrograde leakage of distension media, which facilitates peak uterine distention
- Latex-free construction
- Small catheter size enables placement next to ultrasound probe
- Available in two versions, with and without an integrated stylet



*Innovative elliptical shape affords optimal visualization of the entire uterine cavity*



*“The innovative feature of the H/S Elliptosphere Balloon Catheter allows minimal volume of media to complete balloon distension, thereby adding flexibility of placement in either the cervical canal or uterine cavity, depending on the amount of cervical dilation. This provides the physician the ability to minimize patient discomfort while optimizing visualization of the uterine cavity.”*

**Steven R. Lindheim, MD, FACOG, FRCOG**

## The Elliptosphere's contour and volume control facilitate atraumatic placement in the cervical canal

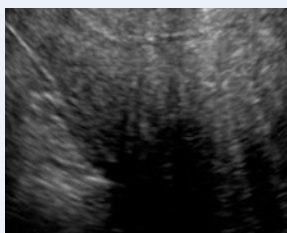
Unique, patented polyurethane non-latex balloon is elliptical at low volume for placement in the cervical canal for optimal visualization of the uterine cavity, including the lower uterine segment. At full volume, the balloon becomes round for placement at the internal os for complete uterine visualization.

## Saline-infused sonohysterography dramatically increases diagnostic yield

The slow infusion of saline into the uterus during transvaginal ultrasound can greatly enhance the depiction of uterine pathology. This procedure, known as Hysterosonography or Sono-hysterography, is now made simple and atraumatic with the balloon-bearing H/S Elliptosphere Catheter Set, so it's easily performed in an office or hospital. Unlike earlier catheters, the balloon can be distended preferentially to maximize visualization and minimize discomfort for individualized patient care.

## SIS is useful for finding focal lesions in AUB

Pre-Saline Infusion



Post-Saline Infusion



Diagnostic Procedure	Sensitivity	Specificity
TV U/S	75%	76%
SIS	93%	94%

Kamel, HS, Darwish, AM, Mohamed, SA. Comparison of transvaginal ultrasonography and vaginal sonohysterography in the detection of endometrial polyps. *Acta Obstet Gynecol Scand* 2000; 79:60

## H/S Elliptosphere catheter is ideal for oil- and water-based hysterosalpingography

Because of the unique design of this flexible, small-sized catheter, the procedure is better tolerated by the patient. The unique placement sheath also enables the balloon-bearing catheter to be positioned quickly into the uterus or cervical canal.



## H/S Elliptosphere™ Procedure Tray Product No. 61-4205

Each Procedure Tray contains:	
5 Fr catheter set (61-4005) in sterile pouch	Inner tray for Povidone-iodine solution
Fenestrated drape	Povidone-iodine ointment
Disposable speculum	Two packs of Povidone-iodine solution
Disposable cervical dilator	36" extension tube
Three swab sticks	20 cc syringe with 18-gauge needle
One wide swab	Lubricating jelly packet
Sterile wrap	Sanitary napkin
Two 3" x 3" gauze pads	

## Ordering information:

### H/S Elliptosphere™ Catheters 5 French Catheter Set

Flexible radiopaque 5 French catheter with 30 cm working length and latex-free 1.5 cc balloon. Includes a 1.5 cc syringe for media delivery.

- H/S Elliptosphere Catheter Set - Product #61-4005
- H/S Elliptosphere with Integrated Stylet - Product #61-4005S

### Complete H/S Procedure Trays

- H/S Elliptosphere Procedure Tray - Product #61-4205



CooperSurgical is the leading company dedicated to providing medical devices and procedure solutions that improve health care delivery to women regardless of clinical setting. Our company is fostering that position through expansion of its core businesses and introduction of advanced technology-based products which aid clinicians in the management and treatment of commonly seen conditions.

203.601.5200 | 800.243.2974 | [coopersurgical.com](http://coopersurgical.com) | 95 Corporate Dr. | Trumbull, CT 06611  
also at [www.YouTube.com/CooperSurgical](http://www.YouTube.com/CooperSurgical)