

INSORB staples are placed entirely underneath the surface layer of skin (epidermis). These staples offer **clinical benefits**, are **cost-effective**², and **highly patient-centric**. Wound care for c-section patients with absorbable staples is similar to care for conventional incision closures, and may even have fewer complications.³

Clinical evidence suggests that incisions closed with INSORB staples are **low-maintenance wounds** that may:

- **Eliminate percutaneous insult**
- **Improve patient comfort & cosmesis**
- **Result in less pain immediately post-op in c-sections²**
- **Demonstrate evidence of reduced wound complications vs. metal staples in c-sections³**

INSORB staples offer enhanced cosmesis – less obvious scarring – with no “railroad track” scars, and no need for metal staple removal.

Actual size:
INSORB Absorbable Staple

INSORB® Skin Stapler Absorbable | Subcuticular

Redefining Optimal Skin Closure

- ✓ Rapid, simple closure
- ✓ May reduce operative time vs. subcuticular sutures¹
- ✓ Eliminates percutaneous insult
- ✓ Improved comfort & cosmesis
- ✓ May result in less pain immediately post-op in c-sections²
- ✓ No percutaneous metal staple removal
- ✓ No suture knots
- ✓ Evidence of reduced wound complications vs. metal staples in c-sections³
- ✓ Eliminates risk of needlestick injuries at the time of closure⁴

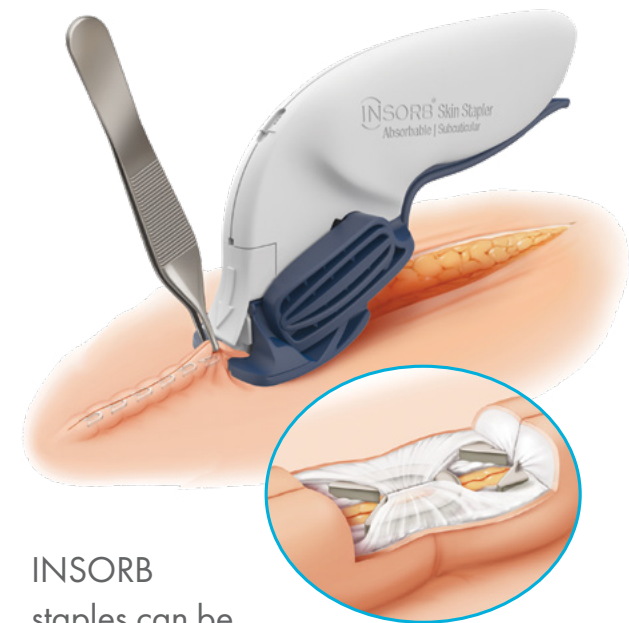
¹ Madsen, Annetta Madeline, et al. Absorbable Subcuticular Staples Compared with Suture for Cesarean Closure. *Obstet Gynecol.* 2015; vol. 125

² Nitsche, Joshua, et al. Skin Closure with Subcuticular Absorbable Staples after Cesarean Section Is Associated with Decreased Analgesic Use. *Archives of Gynecology and Obstetrics*, 2011; vol. 285, no. 4, pp. 979–983.

³ Schrufer-Poland, T. L., Ruiz, M. P., Kassir, S., Tomassian, C., Algren, S. D., & Yeast, J. D. (2016). Incidence of wound complications in cesarean deliveries following closure with absorbable subcuticular staples versus conventional skin closure techniques. *European Journal of Obstetrics & Gynecology and Reproductive Biology*, 206, 53-56. doi:10.1016/j.ejogrb.2016.07.501

⁴ The International Healthcare Worker Safety Center (University of Virginia Health System)

Absorbable Subcuticular Skin Staples



INSORB staples can be rapidly placed underneath the epidermis to close surgical incisions for improved wound healing³ and cosmesis.

Absorbable Skin Staples

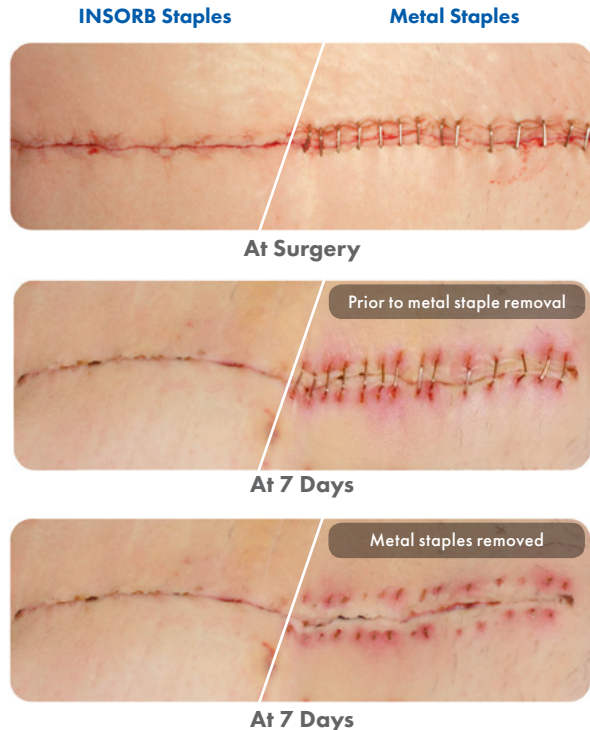
Overview

The INSORB Absorbable Skin Stapler is a subcuticular, interrupted closure modality that is designed to create uniform, symmetric dermis-to-dermis closures.

Features of Absorbable Skin Staples

- Rapid, patient-centric skin closure
- May reduce operative time vs. subcuticular sutures¹
- Eliminates percutaneous insult
- May result in less pain immediately post-op²
- Improved comfort & cosmesis
- No percutaneous metal staple removal
- Evidence of reduced wound complications vs. metal staples in c-sections³

Midline Incision



Interrupted Closure

INSORB staples create an interrupted closure that allows for natural immediate drainage.

Wound Eversion

Using the **INSORB stapler**, surgeons can create a raised incision line (eversion). Eversion is a technique usually used by plastic surgeons. It keeps tension away from the wound edges, and **flattens in a few weeks to create a minimal scar**. The INSORB absorbable skin stapler **allows eversion to be used in more common surgeries**.



Eliminates Percutaneous Insults

Incisions closed with INSORB do not have the numerous skin perforations of metal skin staples.

Clinical studies have shown that **using INSORB staples shows evidence of reduced wound complications³ and may result in less pain immediately post-op**, compared to percutaneous metal skin staples.²

Eliminates the Risk of Sharps Injuries

The **INSORB stapler** is cited as a "sharps-protected device" and presents **no risk of sharps injury**.⁴

Wound Care For Patients With INSORB Staples

It is normal to observe a **raised incision line post-operatively**. This desirable wound eversion will gradually flatten in a few weeks as the wound heals.

No Metal Staple Removal

INSORB staples are absorbed within a few months. Patients are spared the cost, inconvenience, anxiety and discomfort associated with percutaneous metal skin staple removal.

Caesarean Section



There are multiple factors that can affect patient results and recovery and these results may not be representative.