

# Colorectal Procedure Guide

for the Lone Star Retractor System™

Better for the surgeon.  
Better for the patient.  
Better all around.



# Colorectal Procedure Guide

Better for the surgeon. Better for the patient. Better all around.

## SPECIFICATIONS

### For Colorectal Procedures:

Order the Colorectal Kit #3707 or the #3307G ring and #3311-8G sharp stays

### Each Lone Star Retractor System™ Colorectal Kit contains:

- One square disposable retractor ring, Model #3307G  
Dimensions – 14.1 cm x 14.1 cm
- One eight-pack of 5 mm sharp hook stays, Model #3311-8G

*Each kit is packaged in a single-use sterile dispensing tray.  
Sold in boxes containing 5 kits. Products are sterile, single-use only.*

### Key Procedures:

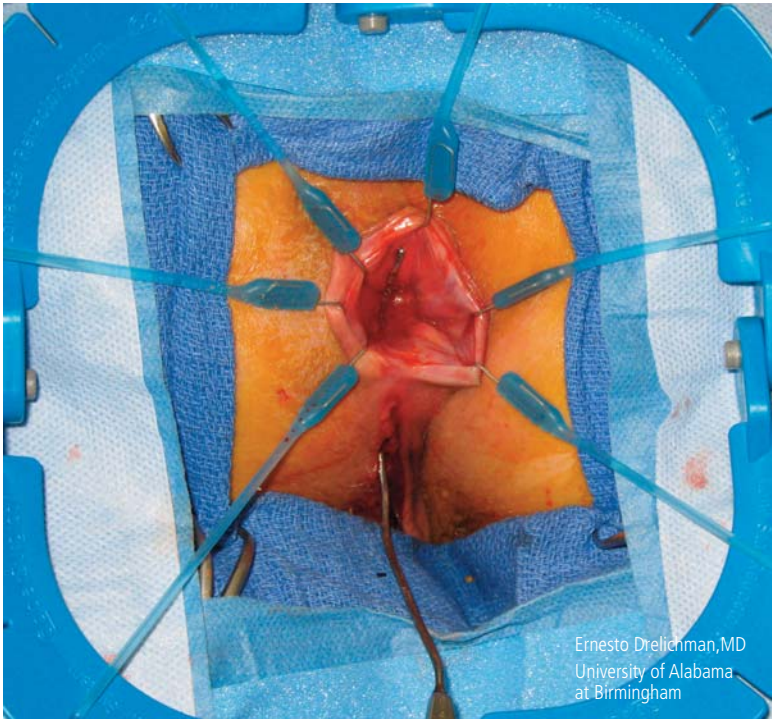
- Anal Fistula Repair
- Rectovaginal Fistula Repair
- Perineal Proctectomy (for Rectal Prolapse Repair)
- Sphincteroplasty
- LAR/Colo-anal Anastomosis
- Hirschsprung's Procedures
- Total proctocolectomy ileal pouch anal anastomosis/mucosectomy



*Special thanks to Dr. Ernesto Drelichman for his procedural input.*

# Anal Fistula Repair

**Recommended Products:** 3707 or 3307G and 3311-8G



Ernesto Drelichman, MD  
University of Alabama  
at Birmingham

# Anal Fistula Repair

## with Mucosal Advancement Flap

**Recommended Products:** 3707 or 3307G and 3311-8G

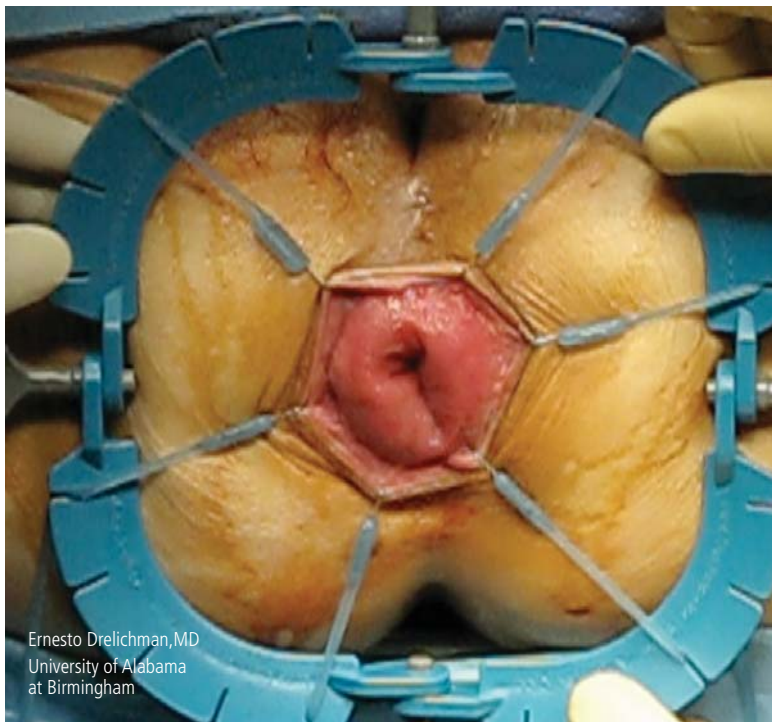
**Patient Positioning:** Lithotomy or prone jack-knife position

- Place the retractor around the anus. The square shape is ideal for colorectal procedures because it completely surrounds the anal canal, permitting full circumferential retraction.
- Place the first stay into tissue, pull to the desired tension and place in one of the slots of the retractor. Repeat with a stay directly opposite the first. Continue placing stays until desired visualization is achieved.
- Identify fistula.
- Create flap above the internal fistula opening.
- Suture flap down to cover the internal fistula opening.
- The Lone Star Retractor System™ effectively manages the surgical site and simplifies transanal colorectal procedures.

# Perineal Proctectomy

(for rectal prolapse)

**Recommended Products:** 3707 or 3307G and 3311-8G



Ernesto Drelichman, MD  
University of Alabama  
at Birmingham

# Perineal Proctectomy

(for rectal prolapse)

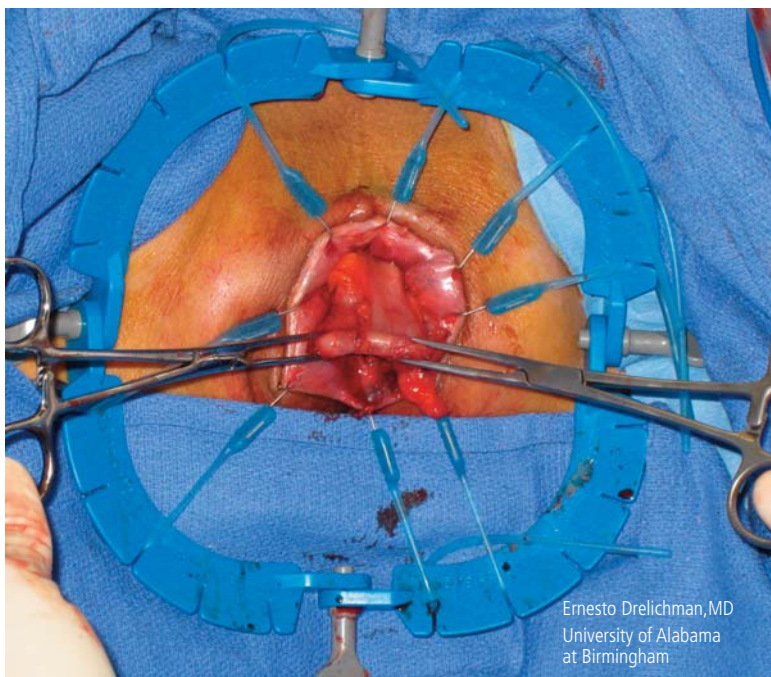
**Recommended Products:** 3707 or 3307G and 3311-8G

**Patient Positioning:** Lithotomy or prone jack-knife position

- Place the retractor around the anus. The square shape is ideal for colorectal procedures because it completely surrounds the anal canal, permitting full circumferential retraction.
- Place the first stay into tissue, pull to the desired tension and place in one of the slots of the retractor. Repeat with a stay directly opposite the first. Continue placing stays until desired visualization is achieved.
- Stays can be easily adjusted to retract further as the procedure progresses.
- Exteriorize rectum until there is no further prolapse.
- Resect prolapsed or redundant rectum.
- Complete the anastomosis by suturing the rectum to the anal mucosa.
- The Lone Star Retractor System™ provides unobstructed visualization and access to the field.

# Low Anterior Resection (LAR) /Colo-anal Anastomosis

Recommended Products: 3707 and 3307G and 3311-8G



Ernesto Drelichman, MD  
University of Alabama  
at Birmingham

# Low Anterior Resection (LAR) /Colo-anal Anastomosis

**Recommended Products:** 3707 and 3307G and 3311-8G

**Patient Positioning:** Lithotomy

- Perform an exploratory laparotomy to rule out any metastasis.
- Perform an oncologic Low Anterior Resection (LAR).
- Mobilize the descending colon.
- Place the retractor around the anus.
- Place the first stay, pull to the desired tension and place in one of the slots of the retractor. Repeat with a stay directly opposite the first. Continue placing stays until desired visualization is achieved.
- The stays will continue to retract as the procedure progresses or can be easily adjusted as needed.
- Just above the dentate line, excise the anal rectal mucosa (mucosectomy).
- Pull the descending colon through the anus without tension.
- The anastomosis is completed by suturing the colon to the anal mucosa.

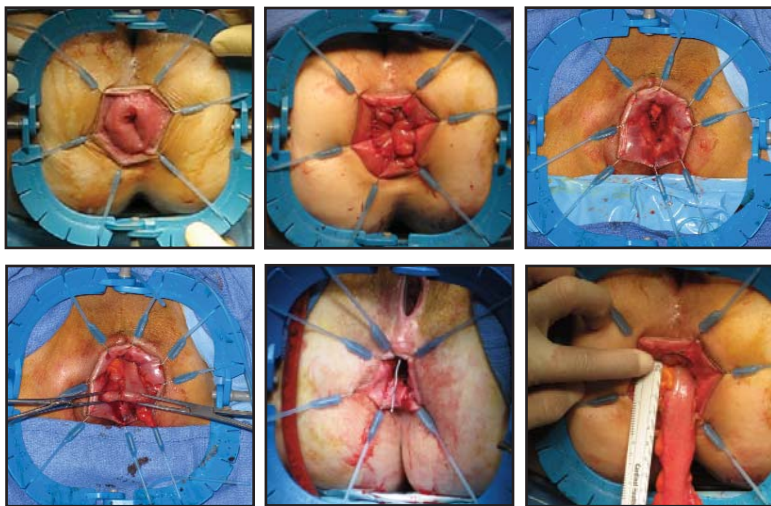


# The Lone Star Retractor System™

## for Colorectal Procedures

### Benefits of the System:

- Cost-effective
- Easy to use
- Provides unobstructed visualization and access
- Effectively manages the surgical site, simplifying the procedure
- Easy to store, stock and pick
- Provides retraction to free up staff



**Special thanks to Dr. Ernesto Drelichman for his support in the development of this guide.**



**Ernesto R. Drelichman, M.D.**

Associate Professor of Surgery  
Director of Surgical Endoscopy  
Department of Surgery  
University of Alabama at Birmingham



(203) 601-5200 | (800) 243-2974 | [coopersurgical.com](http://coopersurgical.com) | 95 Corporate Dr. | Trumbull, CT 06611

©2012 CooperSurgical, Inc.

81653 Rev. 11/12