

Colorectal Procedure Guide

FOR THE LONE STAR RETRACTOR SYSTEM™



Better for the surgeon.
Better for the patient.
Better all around.

CooperSurgical

The Lone Star Retractor System™

Better for the surgeon. Better for the patient.
Better all around.

SPECIFICATIONS

For Colorectal Procedures:

Order the Colorectal Kit #3707 or the #3307G ring and #3311-8G sharp stays

Each Lone Star Retractor System™ Colorectal Kit contains:

- One square disposable retractor ring, Model #3307G
Dimensions - 14.1 cm x 14.1 cm
- One eight-pack of 5 mm sharp hook stays, Model #3311-8G

*Each kit is packaged in a single-use sterile dispensing tray.
Sold in boxes containing 5 kits. Products are sterile, single-use only.*

Key Procedures:

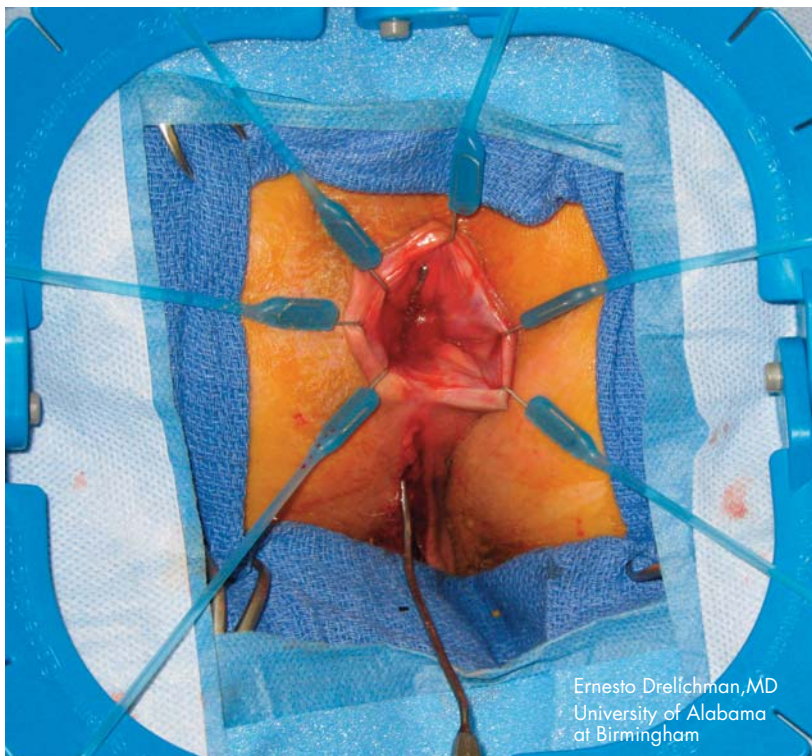
- Anal Fistula Repair
- Rectovaginal Fistula Repair
- Perineal Protectomy (for Rectal Prolapse Repair)
- Sphincteroplasty
- LAR/Colo-anal Anastomosis
- Hirschsprung's Procedures
- Total proctocolectomy ileal pouch anal anastomosis/mucosectomy



Special thanks to Dr. Ernesto Drelichman for his procedural input.

Anal Fistula Repair

Recommended Products:
3707 or 3307G and 3311-8G



Ernesto Drelichman, MD
University of Alabama
at Birmingham

Anal Fistula Repair with Mucosal Advancement Flap

Recommended Products:
3707 or 3307G and 3311-8G

Patient Positioning: Lithotomy or prone jack-knife position

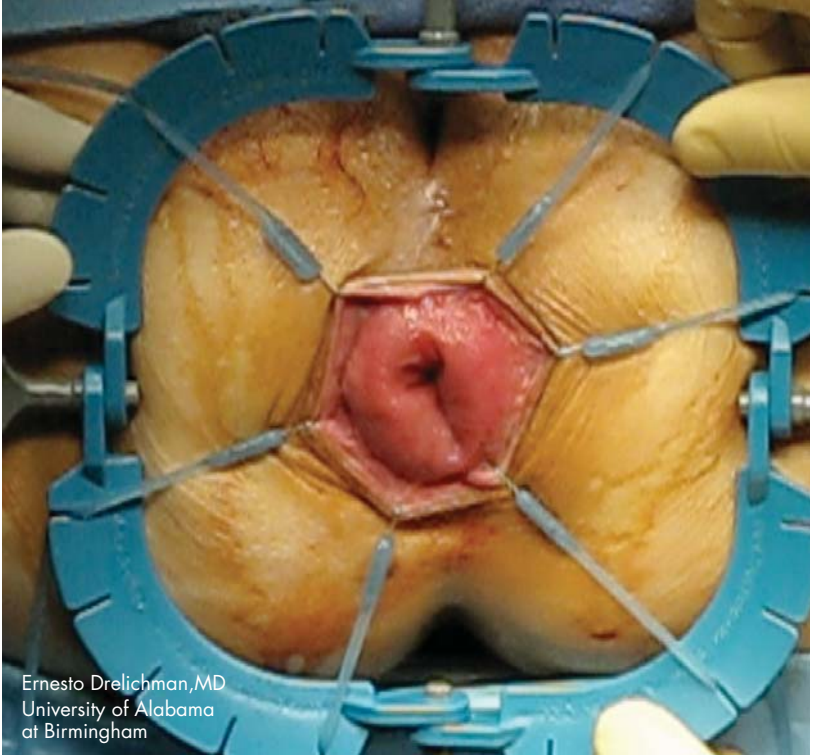
- Place the retractor around the anus. The square shape is ideal for colorectal procedures because it completely surrounds the anal canal, permitting full circumferential retraction.
- Place the first stay into tissue, pull to the desired tension and place in one of the slots of the retractor. Repeat with a stay directly opposite the first. Continue placing stays until desired visualization is achieved.
- Identify fistula.
- Create flap above the internal fistula opening.
- Suture flap down to cover the internal fistula opening.
- The Lone Star Retractor System™ effectively manages the surgical site and simplifies transanal colorectal procedures.

Perineal Proctectomy

(for rectal prolapse)

Recommended Products:

3707 or 3307G and 3311-8G



Ernesto Drelichman, MD
University of Alabama
at Birmingham

Perineal Proctectomy

(for rectal prolapse)

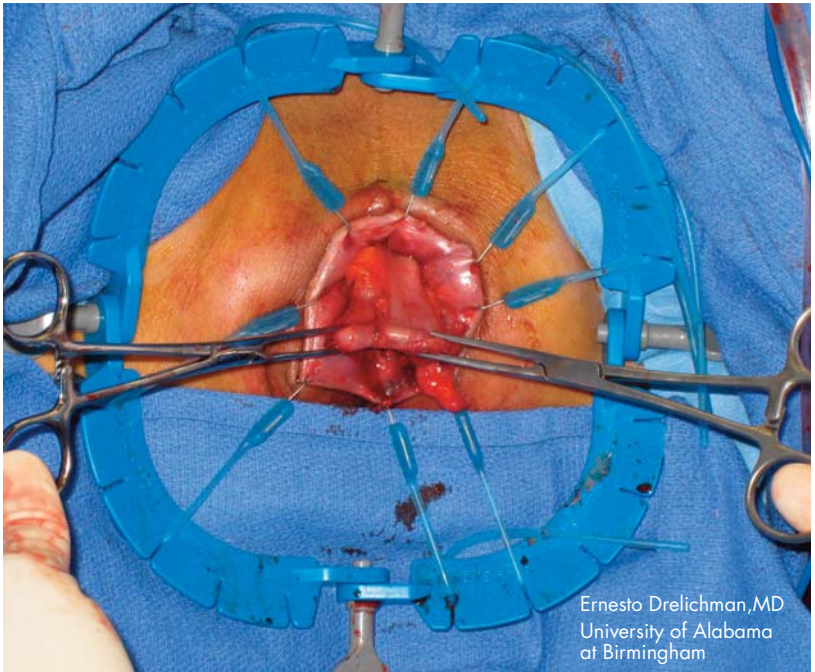
Recommended Products:
3707 or 3307G and 3311-8G

Patient Positioning: Lithotomy or prone jack-knife position

- Place the retractor around the anus. The square shape is ideal for colorectal procedures because it completely surrounds the anal canal, permitting full circumferential retraction.
- Place the first stay into tissue, pull to the desired tension and place in one of the slots of the retractor. Repeat with a stay directly opposite the first. Continue placing stays until desired visualization is achieved.
- Stays can be easily adjusted to retract further as the procedure progresses.
- Exteriorize rectum until there is no further prolapse.
- Resect prolapsed or redundant rectum.
- Complete the anastomosis by suturing the rectum to the anal mucosa.
- The Lone Star Retractor System™ provides unobstructed visualization and access to the field.

Low Anterior Resection (LAR)/Colo-anal Anastomosis

Recommended Products:
3707 and 3307G and 3311-8G



Ernesto Drelichman, MD
University of Alabama
at Birmingham

Low Anterior Resection (LAR)/Colo-anal Anastomosis

Recommended Products:
3707 and 3307G and 3311-8G

Patient Positioning: Lithotomy

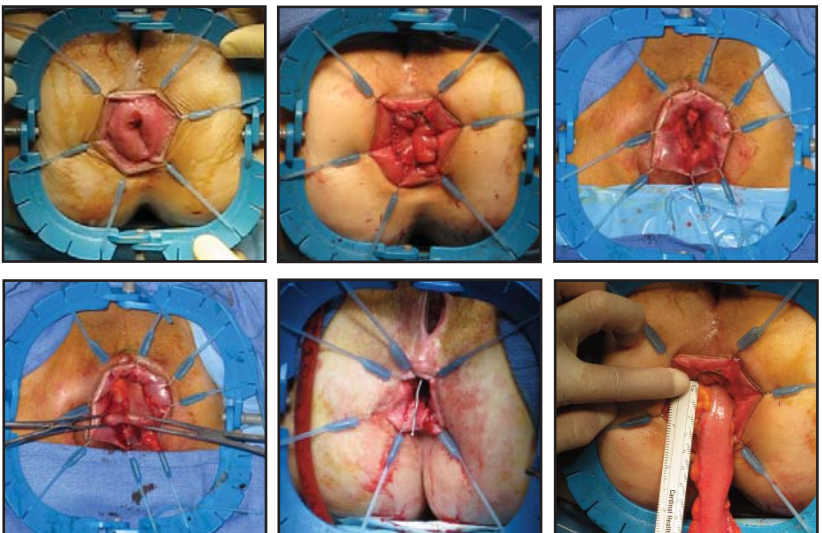
- Perform an exploratory laparotomy to rule out any metastasis.
- Perform an oncologic Low Anterior Resection (LAR).
- Mobilize the descending colon.
- Place the retractor around the anus.
- Place the first stay, pull to the desired tension and place in one of the slots of the retractor. Repeat with a stay directly opposite the first. Continue placing stays until desired visualization is achieved.
- The stays will continue to retract as the procedure progresses or can be easily adjusted as needed.
- Just above the dentate line, excise the anal rectal mucosa (mucosectomy).
- Pull the descending colon through the anus without tension.
- The anastomosis is completed by suturing the colon to the anal mucosa.

The Lone Star Retractor System™

For Colorectal Procedures

Benefits of the System:

- Cost-effective
- Easy to use
- Provides unobstructed visualization and access
- Effectively manages the surgical site, simplifying the procedure
- Easy to store, stock and pick
- Provides retraction to free up staff



Special thanks to Dr. Ernesto Drelichman for his support in the development of this guide.



Ernesto R. Drelichman, M.D.

Associate Professor of Surgery
Director of Surgical Endoscopy
Department of Surgery
University of Alabama at Birmingham

CooperSurgical

www.coopersurgical.com

95 Corporate Drive, Trumbull, CT 06611
800.243.2974 • 203.601.5200

Form # 81653 03/10

© Copyright 2010 CooperSurgical, Inc.