

# Vaginal Access Procedure Guide

FOR THE LONE STAR APS RETRACTOR SYSTEM



Better for the surgeon.

Better for the patient.

Better all around.

CooperSurgical

# The Unique Lone Star APS Retractor

Better for the surgeon. Better for the patient.  
Better all around.

## SPECIFICATIONS

### Order # 3715

(Packaged singly with 2 catheter clips)

Height 16.6 cm

Width 16.6 cm

Weight 77g

### Suggested Stays

3350-4 mm Blunt Hook, 8 pack

3311-4 mm Sharp Hook, 8 pack

3327-7 mm Two-finger Sharp Hook, 4 pack

3384-12 mm Two-finger Blunt Hook, 4 pack

*Products are sterile, single-use only*

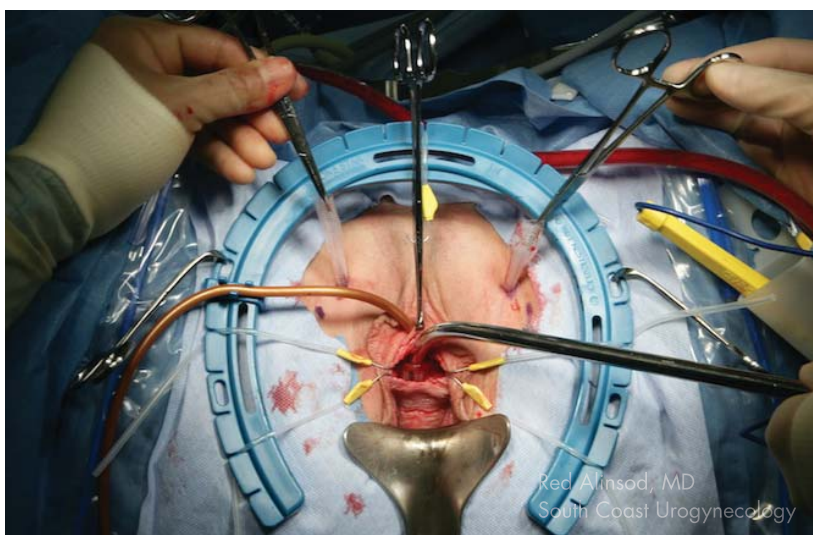
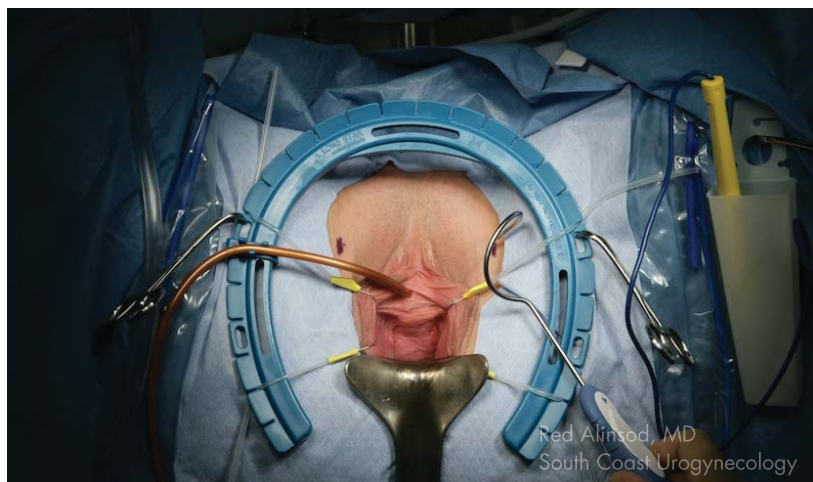


### Designed Specifically For:

- Reconstructive pelvic surgery
- Mesh excision
- Episiotomy Repair
- Vaginal Hysterectomy
- Vaginal Biopsies
- Vaginal Cysts
- Fistula Repairs
- Placement of sub-urethral slings
- Pelvic organ prolapse procedures

# Sling Procedure

Recommended Products:  
3715 and 3350-8G



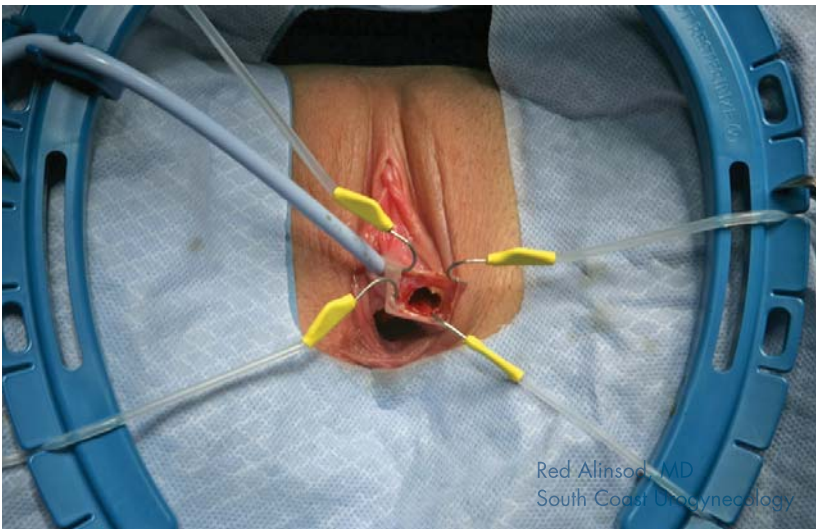
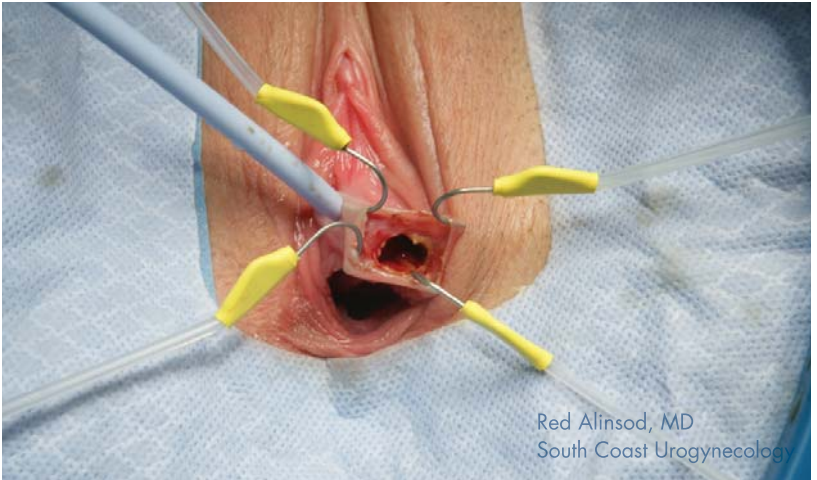
# Sling Procedure

Recommended Products:  
3715 and 3350-8G

- The open end of the APS Retractor provides room for the weighted speculum.
- Place the first stay. Pull in the desired direction, to the desired tension, and place in one of the slots of the APS Retractor. Repeat with a stay directly opposite the first to create counter-traction.
- Use the catheter clip to hold the catheter up and out of the way.
- As the procedure progresses, the stays will adjust and continue to retract tissue. Stays are easily repositioned to maintain optimal site access.

# Vaginal Cyst

Recommended Products:  
3715 and 3350-8G



# Vaginal Cyst

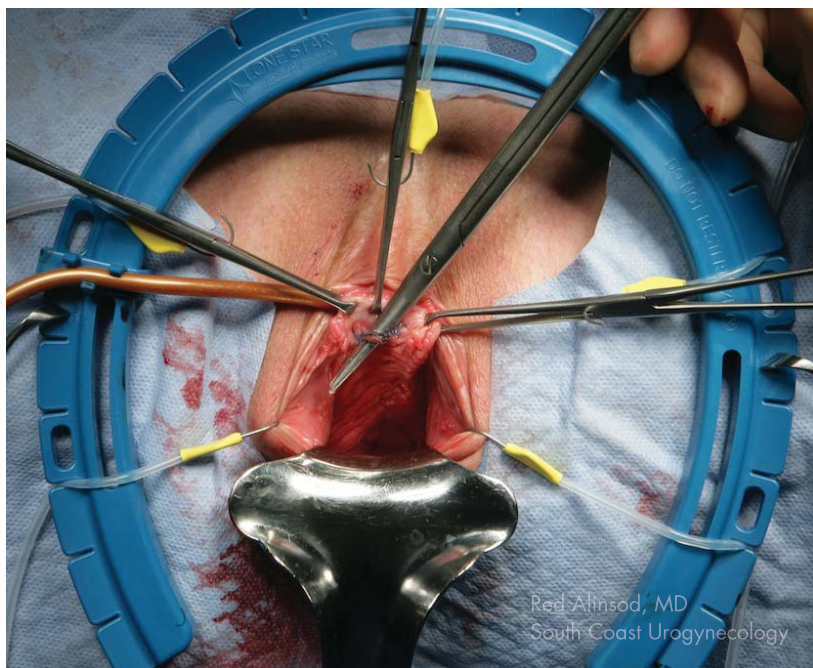
Recommended Products:

3715 and 3350-8G

- The open end of the APS Retractor provides room for the weighted speculum.
- Place the first stay. Pull in the desired direction, to the desired tension, and place in one of the slots of the APS Retractor. Repeat with a stay directly opposite the first to create counter-traction.
- Use the catheter clip to hold the catheter up and out of the way.
- As the procedure progresses, the stays will adjust and continue to retract tissue. Stays are easily repositioned to maintain optimal site access.

# Mesh Excision/Repair

Recommended Products:  
3715 and 3350-8G



# Mesh Excision/Repair

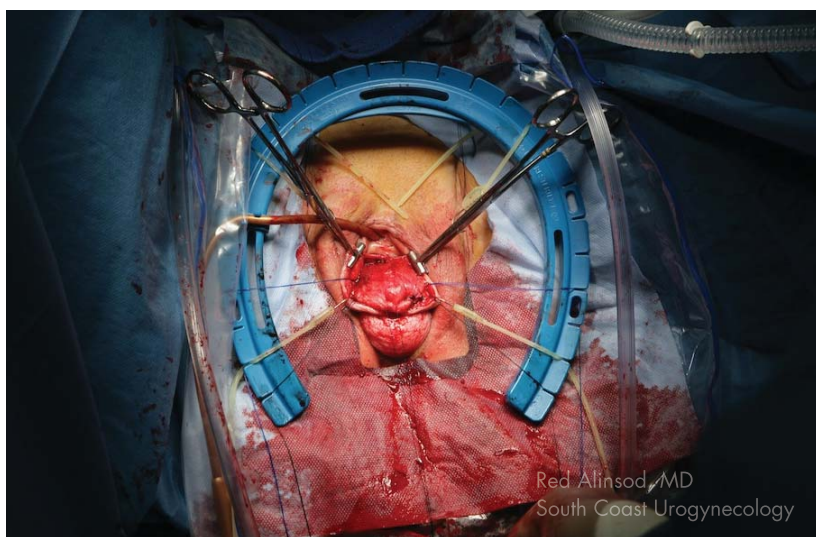
Recommended Products:

3715 and 3350-8G

- The open end of the APS Retractor provides room for the weighted speculum.
- Place the first stay. Pull in the desired direction, to the desired tension, and place in one of the slots of the APS Retractor. Repeat with a stay directly opposite the first to create counter-traction.
- Use the catheter clip to hold the catheter up and out of the way.
- As the procedure progresses, the stays will adjust and continue to retract tissue. Stays are easily repositioned to maintain optimal site access.

# Anterior Repair

Recommended Products:  
3715 and 3350-8G



# Anterior Repair

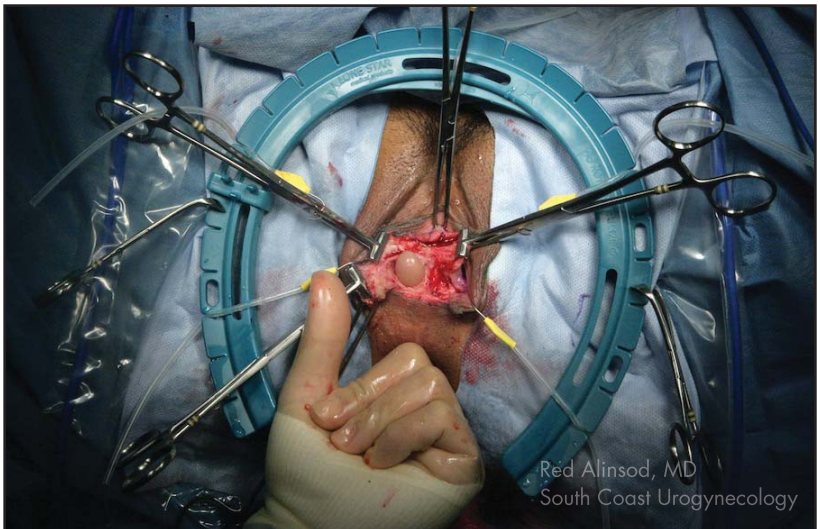
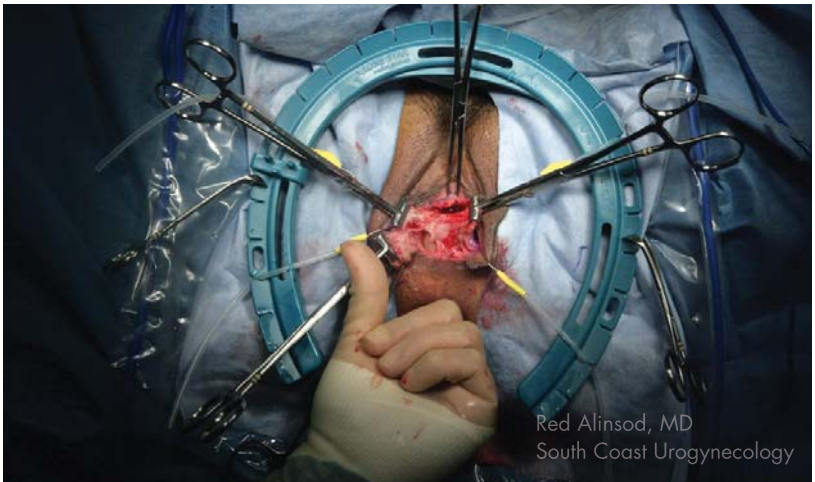
Recommended Products:

3715 and 3350-8G

- The open end of the APS Retractor provides room for the weighted speculum.
- Place the first stay and pull to the desired tension, and place in one of the slots of the APS Retractor. Repeat with a stay directly opposite the first to create counter-traction.
- Use the catheter clip to hold the catheter up and out of the way.
- As procedure progresses, the stays will adjust and continue to retract tissue. If stays are easily repositioned to maintain optimal site access.
- If placing mesh, the slots in the retractor can be used for Suture Management to hold sutures and keep them separate (see 2nd image).
- Additional clamps can be used on tissue and retracted by stays.

# Recto-vaginal Fistula Repair

Recommended Products:  
3715 and 3350-8G



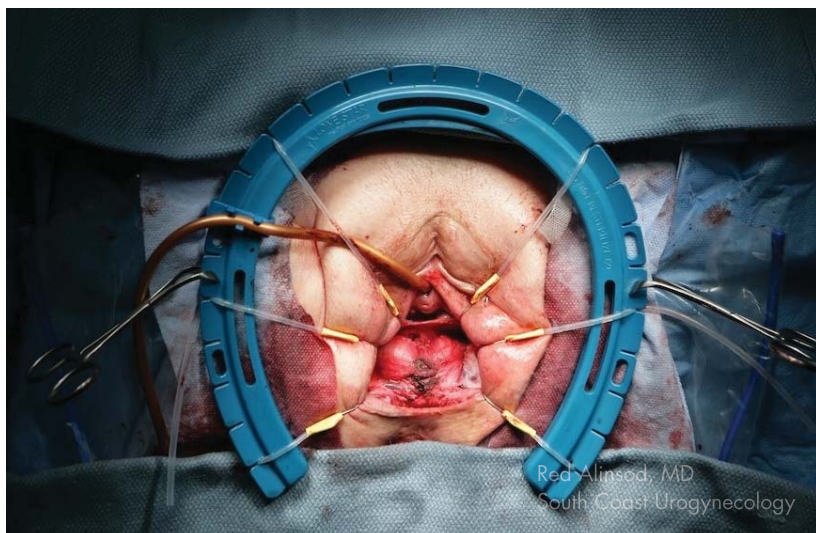
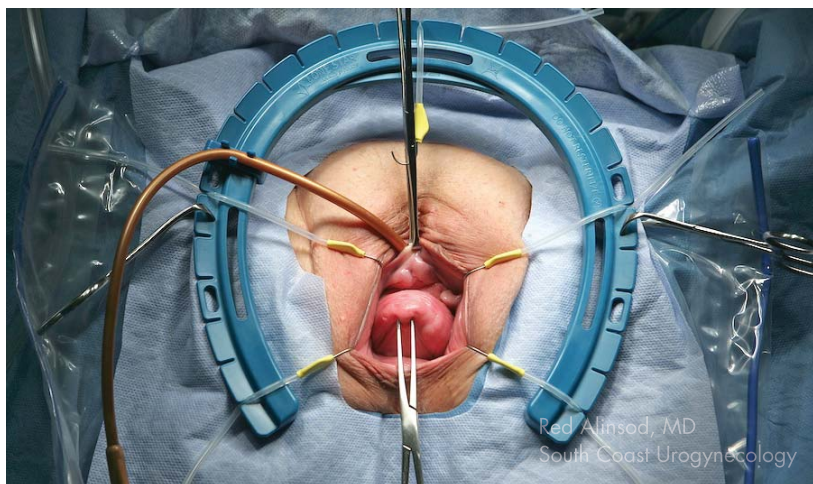
# Recto-vaginal Fistula Repair

Recommended Products:  
3715 and 3350-8G

- Place the first stay and pull to the desired tension, and place in one of the slots of the APS Retractor. Repeat with a stay directly opposite the first to create counter-traction.
- Use the catheter clip to hold the catheter up and out of the way.
- As procedure progresses, the stays will adjust and continue to retract tissue. Stays are easily repositioned to maintain optimal site access.
- If placing mesh, the slots in the retractor can be used for Suture Management to hold sutures and keep them separate (see 2nd image).
- Additional clamps can be used on tissue and retracted by stays.

# Posterior Repair

Recommended Products:  
3715 and 3350-8G



# Posterior Repair

Recommended Products:

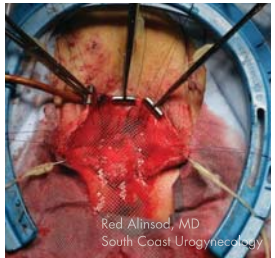
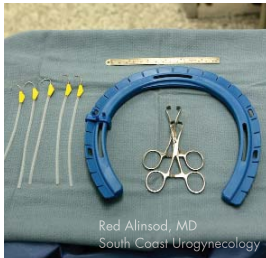
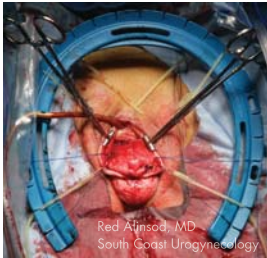
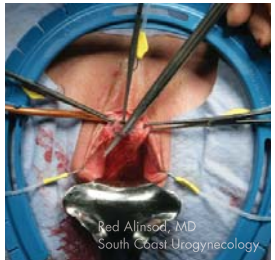
3715 and 3350-8G

- Place the first stay and pull to the desired tension, and place in one of the slots of the APS Retractor. Repeat with a stay directly opposite the first to create counter-traction.
- Use the catheter clip to hold the catheter up and out of the way.
- As procedure progresses, the stays will adjust and continue to retract tissue. Stays are easily repositioned to maintain optimal site access.
- If placing mesh, the slots in the retractor can be used for Suture Management to hold sutures and keep them separate (see 2nd image).
- Additional clamps can be used on tissue and retracted by stays.

# APS Retractor System

## Benefits

- Unobstructed visualization and access
- Designed specifically for pelvic and vaginal surgery
- Effectively manages the surgical site, simplifying the procedure
- Provides retraction to free up staff





---

[www.coopersurgical.com](http://www.coopersurgical.com)

95 Corporate Drive, Trumbull, CT 06611  
800.243.2974 • 203.601.5200

Form # 81581 07/09

© Copyright 2009 CooperSurgical, Inc.